



Briefing Paper No. 5: Kayan Mentarang National Park Participatory Zoning Plan

The Kayan Mentarang National Park (KMNP) is 1.36 million ha in size and contains 11 Customary Land areas, located in the districts of Malinau and Nunukan in East Kalimantan, Indonesia. To develop and implement sustainable management in this considerably large area, spatial management following a zoning system is required. National park zones are areas classified according to their respective functions and ecological/social/economic/cultural values (Minister of Forestry Decree No. 56/Menbut-II/2006). Thus, the KMNP zonation system is based on the potentials and functions of the area from the above-mentioned aspects. The zoning process of the KMNP started almost 20 years ago and has resulted in 3 different sets of criteria and indicators, i.e. from the DP3K (Park Supervisory Board, see briefing paper No. 2), FoMMLA (Indigenous Peoples Alliance of Kayan Mentarang, see briefing paper No. 3) and the Ministry of Forestry (based on the Decree No. 56/Menbut-II/2006). These three sets were recently integrated into the KMNP participatory zonation system and are now accepted by all relevant stakeholders. The zonation activity is part of the FORCLIME-GTZ program (an Indonesian-German collaboration on Forests and Climate Change) through its Component 3, Sub-component KMNP, which is implemented by WWF Indonesia.

KMNP Area and Customary Land Areas

On 7 October 1996, the Minister of Forestry through Decree No. 631/Kpts-II/1996 changed the status of the Kayan Mentarang area from a Nature Reserve to a National Park. KMNP is among the Indonesian national parks innovating participatory zonation, i.e. by combining the interests of conservation with those of the local or indigenous peoples.

The KMNP area is inside 11 customary territories (Krayan Hulu, Krayan Tengah, Krayan Hilir, Krayan Darat, Pujungan, Hulu Bahau, Mentarang Hulu, Lumbis Hulu, Tubu, Apau Kayan-Kayan Hilir dan Kayan Hulu). From generation to generation, these indigenous groups have highly depended on the forests and hold traditional wisdom in managing their hutan adats (customary forests). The population of this area, inhabited since at least 350 years, is approximately 34,500 people, who belong to 6 sub-groups of the Dayak ethnic: Kenyah, Lundayeh, Abai/Tagel, Sa'ban, Punan and Kayan.

Integration of Conservation and Public Interests

According to Minister of Forestry Decree No. 56/Menbut-II/2006 concerning national park zoning guidelines, park zonation is the process of the park's spatial arrangement into management zones. The process includes preparation, data collection and analysis, zoning plan drafting, public consultation, planning, demarcation and designation with regard to ecological, social, economic and cultural aspects. Each national park comprises core

zone, forest zone, use zone and other zones (traditional zone, rehabilitation zone, religious/historical/cultural zone and special zone).

The indigenous peoples in and around the KMNP traditionally also applied a "zoning approach" in their customary territories. Their lands are allocated for several purposes such as protection, agriculture/cultivation and production according to ecological/economic/social values and future development plans.

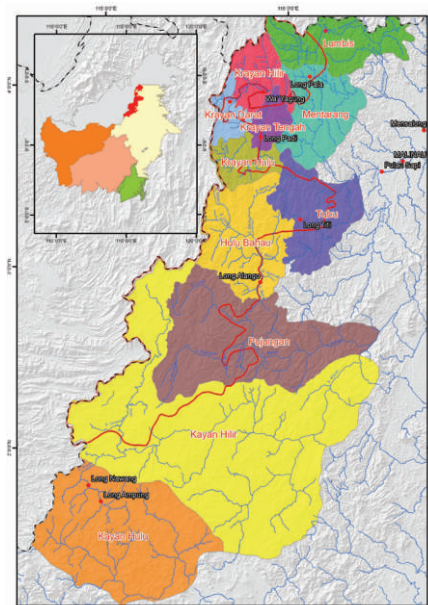
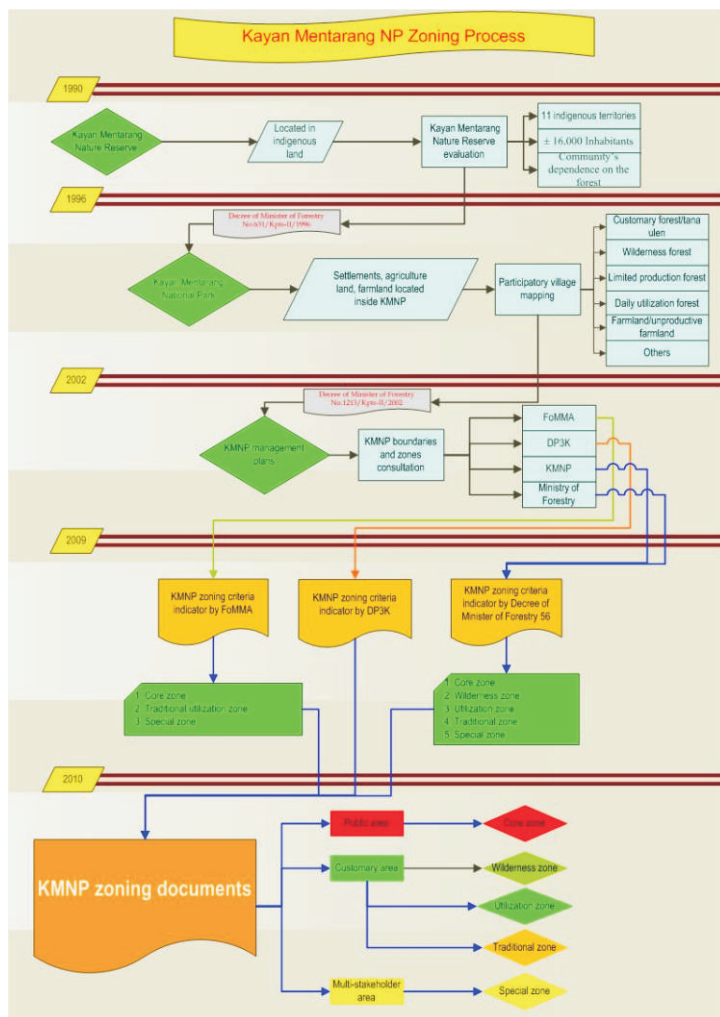


Figure 1. Customary land in Kayan Mentarang National Park

Figure 2. Zoning process of Kayan Mentarang National Park



In parallel, the indigenous people suggested in September 2009 a more detailed concept of local wisdom-based zoning to the Balai TNKM (the Park’s management institution created by the Ministry of Forestry in 2006). Three zones were proposed, namely Core Zone, Traditional Zone and Special Zone. FoMMA also recommended that conservation-related customary laws be adopted in the management of the KMNP.

In view of this, the Ministry of Forestry, in this case the Balai TNKM and PHKA (Directorate for Forest Protection and Nature Conservation), decided that the KMNP zoning should consider the recommendations by FoMMA and aim at developing a synergy between customary laws and the relevant government regulations. A small team was formed to integrate the available concepts into one set of zoning criteria and indicators, which shall guide the zonation in KMNP and create a basis for similar work in other national parks in Indonesia.

Considering the special conditions of the KMNP, the team has come up with one set of zoning criteria and indicators, and recommended 3 (three) general areas and 5 zones within KMNP, as follows:

1. "public" area: core zone
2. "customary" area: forest/wilderness zone, use zone and traditional zone
3. "multi-stakeholder" area: special zone

To accommodate the aspirations of the indigenous people, FoMMA as their representative forum, was established in Malinau district in October 2000. The local people started documenting their traditional uses (core and use zones) and boundaries, which have been included in Kayan Mentarang National Park Long Term Management Plan 2001 – 2025 (KMNP-MP), legalized through Minister of Forestry Decree No. 1213/Kpts-II/2002. The KMNP-MP also suggests the inclusion of customary law in the Park’s management (zones, boundaries, regulations, management systems; as well as the creation of a policy or oversight board and a special management institution for the Park).

As a follow-up to the legalization of the KMNP-MP, FoMMA, facilitated by WWF-Indonesia through the Indonesian - German KMNP project, drafted detailed guidelines and spatial plans for a number of customary territories during August 2005 and October 2006. Based on this and a process of continuous consultations, the in 2007 created collaborative management institution or oversight body of the Park (DP3K) proposed on 25 November 2008 a specific set of Zoning Criteria and Indicators for KMNP.

Figure 3. Kayan Mentarang National Park zoning plans

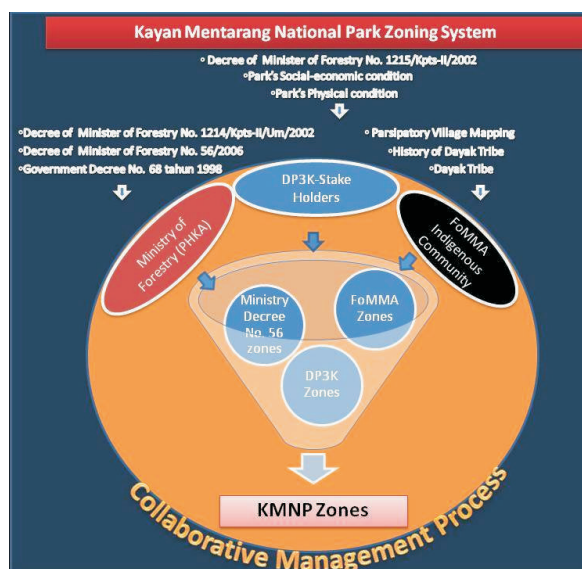


Table 1. Zones and management direction agreed by FoMMA, Ministry of Forestry (PHKA), Balai TNKM and DP3K.

Zone	PHKA-BTNKM-DP3K & FoMMA Criteria and Indicators	Management Direction
Core Zone	Zone that represents a particular ecosystem type or a home range for keystone species, far from human activities, and serves as a protection for water catchments of several big rivers and water systems.	Protection and security; research and development; sciences; education. <i>Directly managed by the Balai TNKM</i>
Forest Zone	Zone that serves as a protection/buffer zone for the core zone. Restricted use by local communities allowed.	Transboundary conservation development; utilization of <i>gaharu</i> by the local communities <i>Managed by the Balai TNKM and indigenous peoples</i>
Use Zone	Zone whose location, natural conditions and potentials are still well-preserved and can be used for payment for environmental services/PES (PWS, Non Timber Forest Products, ecotourism, bio-prospecting, REDD, etc).	Research; ecotourism tracking; natural resource use (local people, restricted); bio-prospecting; PES; hunting (limited) <i>Managed by the Balai TNKM and indigenous peoples</i>
Traditional Zone	Zone which is designated to be managed and utilized by the indigenous peoples who, historically, have taken care of the area and still depend on its natural resources.	Research, development and education; ecotourism; natural resource use (by local people only); building materials and transportation (by local people only); cultivation and habitat development; hunting <i>Managed by the Balai TNKM and indigenous peoples</i>
Special Zone	Zone whose natural resources have been used or which has been inhabited before the establishment of the national park and served as the center of economic growth and residential areas.	Ecotourism; settlements and ex-settlements; community-based agriculture & cultivation; communication/ educational/ transportation infrastructures. <i>Managed by the Balai TNKM, the local government and indigenous peoples</i>

Follow-up Plan

The participatory zoning concept for the KMNP reflects years of discussion between the Ministry of Forestry (PHKA), the Balai TNKM, WWF-Indonesia, GTZ, FoMMA and an expert team recently supported by the FORCLIME-GTZ program. It constitutes a practical basis for all future work within the Park's boundaries and reflects local aspirations and legal requirements. The final delineation of the different zones is ongoing and shall be completed in all 11 customary territories until the end of 2010. The zonation of the KMNP also targets at boosting the establishment of the Park's outer boundary and buffer zone. All activities aim at achieving an effective, efficient and multistakeholder based management of the national park.

BALAI TAMAN NASIONAL KAYAN MENTARANG

Kantor (temporary):
Jl. Pusat Pemerintahan Komplek Perumahan DPRD
Tj. Belimbing, Malinau - Kalimantan Timur
Telp/Fax : (0553) 20 22 757
Telp : (0553) 20 22 758
Email : balai_tnkm@yahoo.com

FOREST AND CLIMATE CHANGE PROGRAMME (FORCLIME)

Deutsche Gesellschaft für Technische Zusammenarbeit (GTZ) GmbH
Mangala Wanabakti Building, Block VII, 6th Floor
Jln. Jenderal Gatot Subroto
Jakarta 10270, Indonesia
Email : gtzforclime@cbn.net.id

WWF Indonesia, Kayan Mentarang National Park Program

Jln. Raja Pandhita No. 89 RT. 07
Tj. Belimbing, Malinau Kota
Kalimantan Timur - 77554
Telp : 0553 - 215 23
Email: drukman@wwf.or.id

Figure 4. Draft of KMNP zones

