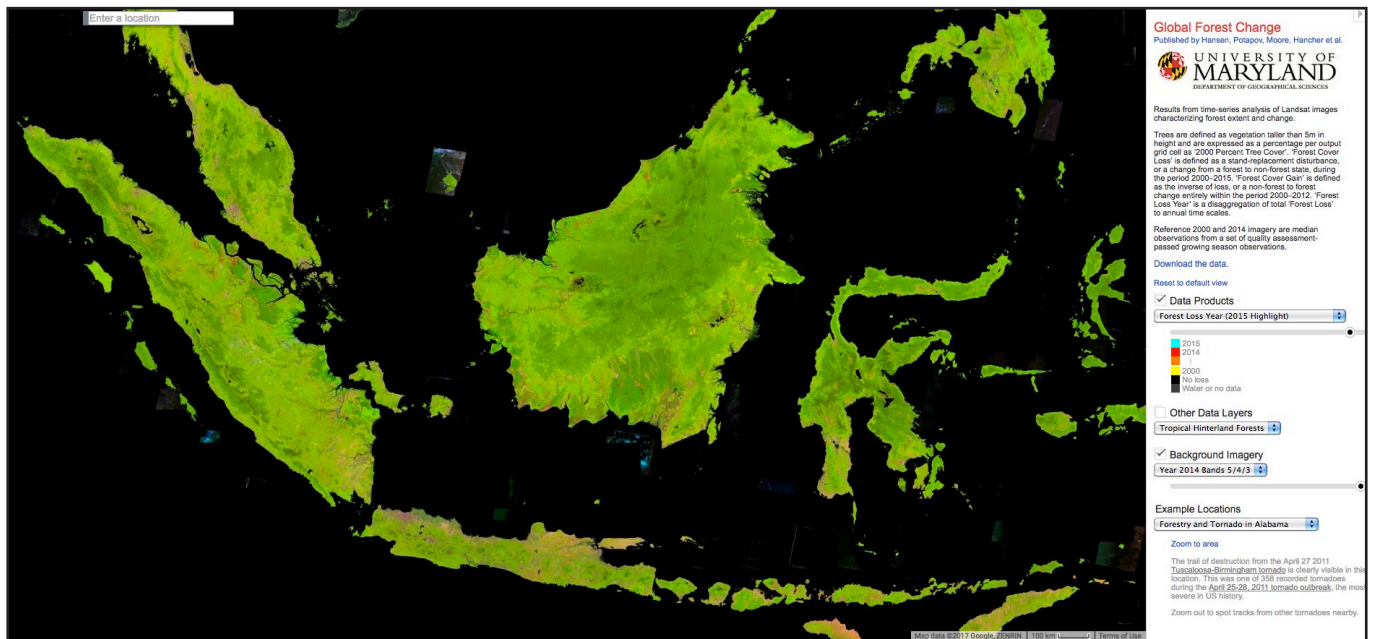


The high-resolution global map of 21st-century forest cover change from the University of Maryland ('Hansen Map') is hugely overestimating deforestation in Indonesia

The first-ever high-resolution map of global deforestation produced by the University of Maryland (UM) (Hansen et al. 2013)¹ has attracted high attention among international policy makers, forest practitioners and scientists. Data on platforms like Global Forest Watch are based on the 'Hansen Map'. In order to assess the reliability of UM data on district level, the Forests and Climate Change Programme (FORCLIME) jointly implemented by Deutsche Gesellschaft für Internationale Zusammenarbeit (GIZ) GmbH and the Indonesian Ministry of Forestry compared deforestation rates derived from Hansen and FORCLIME studies within three districts in Kalimantan (Kapuas Hulu, Berau, Malinau). Results show that due to the classification used by UM, non-forest land such as smallholder agriculture, shrubland or plantations is wrongly classified as forest area. Consequently the 'Hansen Map' is largely overestimating forest cover and deforestation rates at the local level. Hence, the dataset compiled by UM cannot be regarded as reliable tool for assessing deforestation in Indonesia. Research based on the 'Hansen Map' has to be checked cautiously as it might produce wrong results as well.



<http://earthenginepartners.appspot.com/science-2013-global-forest>

Conclusions drawn from the 'Hansen Map', especially the increasing rates of forest loss detected for Indonesia raised concerns about the country's compliance with its ambitious greenhouse gas (GHG) emission reduction targets. The Global Forest Watch platform, the first tool to monitor global forests promoted by the World Resource

Institute (WRI) and developed over several years with more than 40 partners is also based on the 'Hansen Map' and consequently the results must be questioned, at least for countries with tropical forest ecosystems similar to the ones of Indonesia.



Implemented by:
giz Deutsche Gesellschaft für Internationale Zusammenarbeit (GIZ) GmbH

In cooperation with:



The 'Hansen Map' is based on remote sensing only and is using a global definition of 'forest'.

Hansen quantifies global annual forest loss between the years 2000 and 2012 based on the evaluation of more than 650,000 Landsat satellite images at a spatial resolution of 30 meters. A forest cover benchmark map generated for the year 2000 forms the basis for the analysis. The benchmark map is based on remotely sensed pixel analysis without ground truthing to verify pixel values for individual countries. In addition to that, a unified definition of forest (vegetation above 5 m,) and forest loss (stand-replacement or complete removal of tree cover) is globally applied.

FORCLIME used a combination of remote sensing and ground truthing methods.

The Forests and Climate Change Programme (FORCLIME) jointly implemented by Deutsche Gesellschaft für Internationale Zusammenarbeit (GIZ) GmbH and the Indonesian Ministry of Forestry has conducted land-cover analyses in the districts of Kapuas Hulu (West Kalimantan Province), Berau (East Kalimantan Province) and Malinau (North Kalimantan Province) for the years 1990, 2000, 2005 and 2010.² Object-based classifications of Landsat satellite images in combination with extensive ground truthing data provide the basis for the analysis. Identified image objects are assigned with predefined land-cover classes according to decision rules based on spectral spatial, shape, thematic, and topologic criteria. The Land Cover Classification System (LCCS) established by the Food and Agricultural Organization (FAO) is used to describe the earth's surface. Natural forest loss is quantified from changes among forest land-cover classes.

Hansen overestimates forest cover in the analyzed districts of Kalimantan, Indonesia.

The comparison of Hansen's forest benchmark map from the year 2000 with Landsat satellite imagery and FORCLIME derived forest cover maps from the same year reveals a high overestimation of forest cover within Hansen datasets (Figure 1). Non-forest areas such as shrubland, plantations and agricultural land can clearly be identified in the Landsat image as well as the FORCLIME natural forest cover map. However, these forest cover and deforestation patterns cannot be recognized in the benchmark map compiled by Hansen. Furthermore, a high overestimation of forest cover remains prevalent within Hansen's benchmark map, even if forest cover thresholds for the pixel values are set to 50% or 75%.

Hansen detects high rates of phantom deforestation.

In addition, superimposing Hansen deforestation datasets (2005-2010) with FORCLIME land-cover classification (2005) indicates that large quantities of forest loss appear outside of forest land-cover classes. In fact, this illustrates that deforestation detected by Hansen predominately appears in areas which are not regarded as natural forests. The example shown in Figure 2 shows that only 23,227 ha of forest loss identified by Hansen between 2005-2010 in Kapuas Hulu appear on natural forest land-cover classes. 57,450 ha of deforestation was detected within non-forest land-cover classes. Consequently, Hansen datasets for Kapuas Hulu result in an overestimation of deforestation by 347%. If this so called phantom deforestation is excluded from Hansen forest loss datasets, deforestation appears to be similar to FORCLIME results.

Figure 1: Comparison of Landsat satellite image (band combination 543), FORCLIME forest map and Hansen forest benchmark map for greater Putussibau area, Kapuas Hulu, West Kalimantan, Indonesia

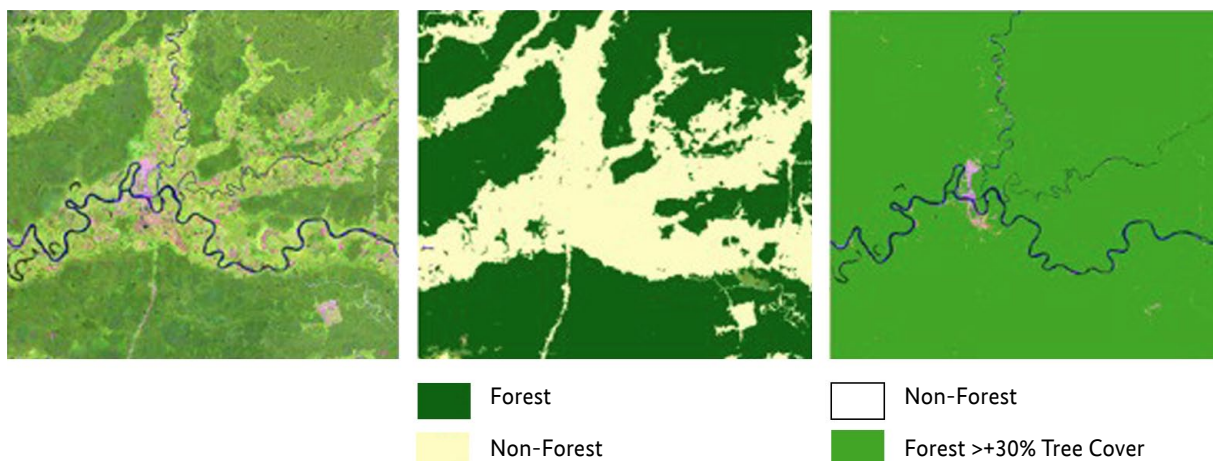


Figure 2: Hansen forest loss superimposed with FORCLIME land-cover classification in Kapuas Hulu, West Kalimantan.

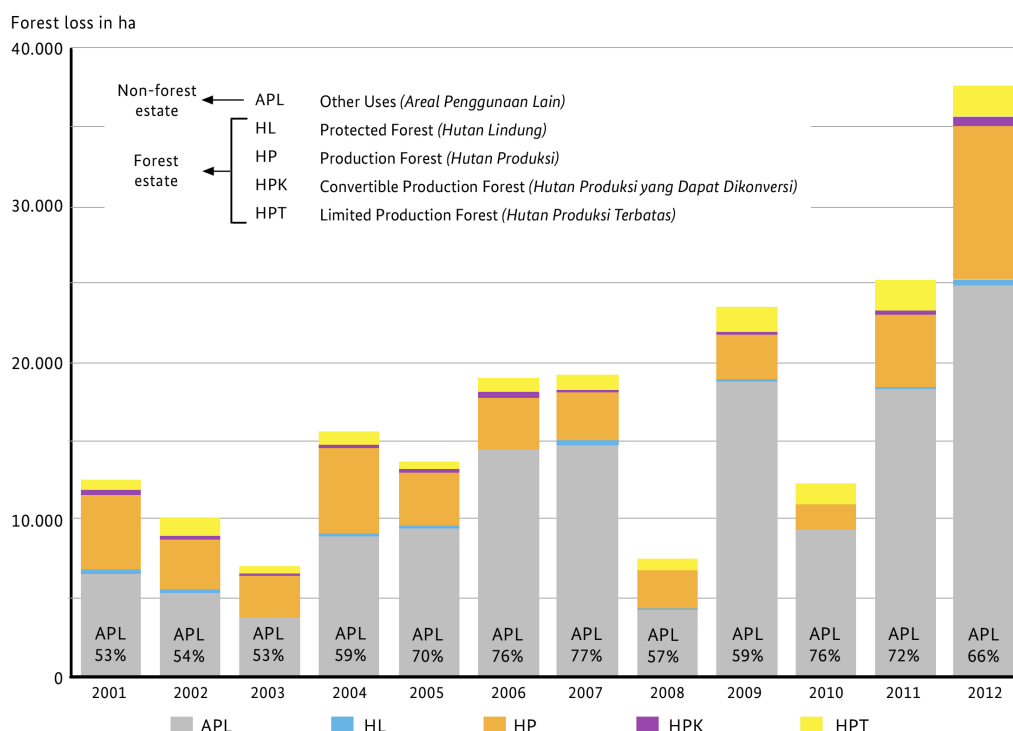
Kapuas Hulu (West Kalimantan)		
Land cover classification	Deforestation detected by Hansen between 2005-2010 within land cover classes	
	Area (ha)	
		Deforestation detected by FORCLIME between 2005-2010 within land cover classes
		Area (ha)
Natural Forest	23,227	25,400
Shrubland, shifting cultivation, smallholder agriculture, grassland	47,233	0
Plantation	806	
Water	861	
Wetland	720	
Bare area	6,895	
Data gap	935	
Total	80,677	25,400

Very high phantom deforestation rates indicate an overestimation of forest loss in the 'Hansen Map'.

To illustrate these findings an additional comparison of forest loss was conducted using two land use types only: forest (*kawasan hutan*) and non-forest estate (*APL*). Superimposing Hansen derived forest loss data with forest and non-forest estate boundaries from the Ministry of Forestry, reveals that deforestation detected by Hansen predominately occurs outside forest estates (Figure 3). 68.46% of deforestation encountered by Hansen in

Berau (East Kalimantan) between 2000-2012 was found outside of forest estate boundaries. Even though, forest losses on *APL* areas undoubtedly occur, only 6.75% (6.2 Mha) of Indonesian forests were located on *APL* areas in 2009.³ Therefore, the high rate of deforestation on non-forest estates suggests that the Hansen dataset erroneously identifies non-forest land cover types as forest (e.g. shrubland, shifting cultivation, regrowth: Figure 2) Therefore the high deforestation rate on non-forest land can be regarded as an additional indicator for the overestimation of forest loss detected by Hansen.

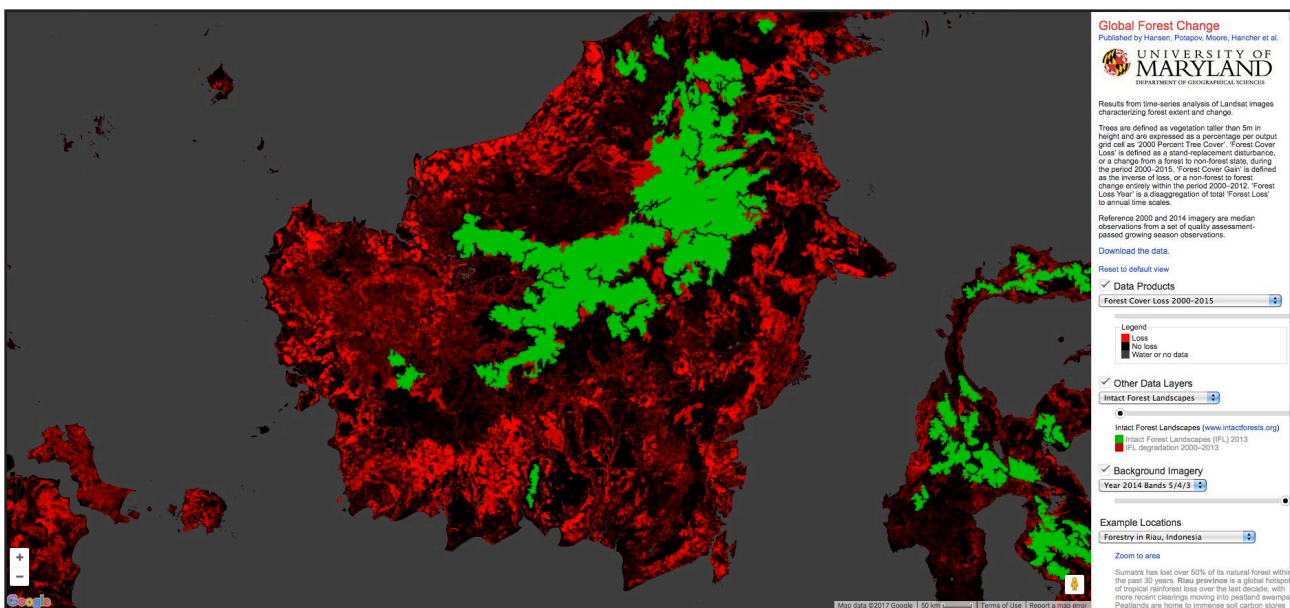
Figure 3: Hansen forest loss superimposed with FORCLIME land-cover classification in Kapuas Hulu, West Kalimantan.



The dataset in its current publicly available version has to be regarded as impractical and unreliable for the quantification of forest loss in humid tropical areas with high land-use dynamics.

The comparison of forest cover and deforestation datasets on district level clearly indicates that even though Hansen's dataset shows significant potential for forest monitoring, the main intention to provide a globally consistent and locally relevant dataset of forest change has not been achieved. We show that the globally unified forest definition in combination with the per-pixel estimates of tree cover used by Hansen *et al*, leads to a significant overestimation of tree cover and consequently forest extent.

Therefore, the dataset in its publicly available version has to be regarded as impractical and unreliable for the quantification of forest loss in Indonesia. Furthermore it is questionable if the dataset and its interpretation is able to detect the real forest cover and forest cover changes in similar climatic zones around the globe. Consequently it needs to be verified if the application of the Global Forest Watch tool and other results based on the 'Hansen Map' are applicable at all in the context of good forest governance, climate change mitigation (REDD+) and biodiversity conservation.



<http://earthenginepartners.appspot.com/science-2013-global-forest>

Prepared by:

Franz-Fabian Bellot^A GIS specialist, previously worked for FORCLIME;

Mathias Bertram^A Forest Policy Adviser, previously worked for FORCLIME;

Peter Navratil^B Remote Sensing Specialist (navratil@rsggmbh.de);

Florian Siegert^B Remote Sensing Specialist (siegert@rsggmbh.de);

Helmut Dotzauer^A Senior Adviser for Sustainable Forest Management, previously worked for FORCLIME.

For more information, please contact:

Georg Buchholz, Programme Director

The Forests and Climate Change Programme (FORCLIME) is a bilateral Programme of the Indonesian Ministry of Environment and Forestry (MoEF) and the German Ministry for Economic Cooperation and Development (BMZ). The Programme is composed of a technical cooperation (TC) module supported by the Deutsche Gesellschaft für Internationale Zusammenarbeit (GIZ) and a financial cooperation (FC) module supported by the KfW Development Bank.

^A FORCLIME Forests and Climate Change Programme, Deutsche Gesellschaft für Internationale Zusammenarbeit (GIZ) GmbH, Manggala Wanabakti Building, Block VII, Jl. Jenderal Gatot Subroto, Jakarta 10270, Indonesia

^B Remote Sensing Solutions GmbH, Isarstraße 3, 82065 Baierbrunn bei München, Germany

¹ Hansen, M. C., P. V. Potapov, R. Moore, M. Hancher, S. A. Turubanova, A. Tyukavina, D. Thau, S. V. Stehman, S. J. Goetz, T. R. Loveland, A. Kommareddy, A. Egorov, L. Chini, C. O. Justice, and J. R. G. Townshend. 2013. "High-Resolution Global Maps of 21st-Century Forest Cover Change." *Science* 342 (15 November): 850–53. Data available online from: <http://earthenginepartners.appspot.com/science-2013-global-forest>.

² Forests and Climate Change Programme (FORCLIME). 2013. "Land Cover Situation and Land-Use Change in the Districts of West Kalimantan and East Kalimantan, Indonesia." Report available online from: http://forclime.org/images/documents/RSS_Eng_Final_web.pdf

³ Murdiyarto, D., Dewi, S., Lawrence, D. and Seymour, F. 2011 Indonesia's forest moratorium: a stepping stone to better forest governance? Working Paper 76. CIFOR, Bogor, Indonesia. Report available online from: http://www.cifor.org/publications/pdf_files/WPapers/WP-76Murdiyarto.pdf

Forests and Climate Change Programme (FORCLIME)

Manggala Wanabakti Building, Block VII, 6th Floor
Jl. Jenderal Gatot Subroto, Senayan
Jakarta 10270, Indonesia
Tel: +62 (0) 21 572 0214
Fax: +62 (0) 21 572 0193

www.forclime.org